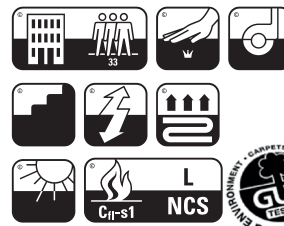


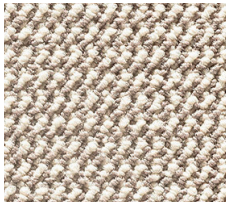
CONSTRUCTION	Tufting 1/10" loop pile	PERMANENTLY ANTISTATIC	ISO 6356
STRUCTURE	Tufté 1/10" bouclé	ANTISTATIC PERMANENT	< 2 kV
STRUKTUR	Getuftet 1/10" Schlinge	PERMANENT ANTISTATISCH	
STRUCTUUR	Getuft 1/10" lussenpool	PERMANENT ANTISTATISCH	
PILE MATERIAL	100% PA solution dyed	IMPACT NOISE RATING	ISO 140-8
COMPOSITION DU VELOURS		ISOLATION PHONIQUE	24 dB ΔLw
POLMATERIAL		TRITTSCHALLVERBESSERUNG	
POOLMATERIAAL		GELUIDSISOLATIE	
PRIMARY BACKING	Non Woven PES	SOUND ABSORPTION	ISO 354
SUPPORT	PES non tissé	ABSORPTION PHONIQUE	0,20 Qw
TRÄGERMATERIAL	PES Vlies	SCHALLABSORPTIONSGRAD	
TUFTDOEK	PES Vilt	GELUIDSABSORPTIE	
SECONDARY BACKING	Action Back	THERMAL RESISTANCE	ISO 8302
DOSSIER		RÉSISTANCE THERMIQUE	0,07 m² K/W
RÜCKEN		WÄRMEDURCHLASSWIDERSTAND	
TAPIJTRUG		WARMTEDOORLAATWEERSTAND	
PILE WEIGHT	Ca. 625 gr/m²	FASTNESS TO LIGHT	ISO 105-B02
POIDS DU VELOURS		SOLIDITÉ A LA LUMIÈRE	≥ 7
POLEINSATZGEWICHT		LICHTECHTHEIT	
POOLGEWICHT		LICHTECHTHEID	
TOTAL WEIGHT	Ca. 1.850 gr/m²	COLOUR FASTNESS TO WATER	EN ISO 105-E01
POIDS TOTAL		SOLIDITÉ À L'EAU	≥ 4-5
GESAMTGEWICHT		WASSERECHTHEIT	
TOTAAL GEWICHT		WATERECHTHEID	
PILE HEIGHT	Ca. 3,0 mm	FIRE RESISTANCE	EN 13501-1
EPAISSEUR DU VELOURS		COMPORTEMENT AU FEU	Cfl-s1
POLHÖHE		BRENNVERHALTEN	
POOLHOOGTE		BRANDGEDRAG	
TOTAL HEIGHT	Ca. 6,0 mm	RUBBING FASTNESS	EN ISO 105-X12
EPAISSEUR TOTAL		SOLIDITÉ AU FROTTEMENT	≥ 4
GESAMTHÖHE		REIBECHTHEIT	
TOTALE DIKTE		WRIJFECHTHEID	
TUFT DENSITY	Ca. 225 000/m²	NUMBER OF COLOURS	18
NOMBRES DE POINTS		NOMBRES DE COULEURS	
NOPPENZAHL		ANZAHL FARBEN	
AANTAL PUNTEN		AANTAL KLEUREN	
PILE DENSITY	Ca. 0.123 g/cm³	WIDTH	EN ISO 3018
DENSITÉ DU VELOURS		LARGEUR	ca. 400 cm (7 colours
POLROHDICHTÉ		BREITE	also in 500 cm)
POOLDICHTHEID		BREEDTE	

CLASSIFICATION	EN 1307
CLASSEMENT	33 - LC1
KLASSIFIKATION	
CLASSIFICATIE	
CASTOR CHAIR SUITABILITY	EN 985
CHAISE À ROULETTES	A: intensive use
STUHLROLLENEIGNUNG	
ROLSTOELGESCHIKTHEID	
STAIR SUITABILITY	EN 1963
ESCALIERS	A: intensive use
TREPPENEIGNUNG	
TRAPPENGESCHIKTHEID	

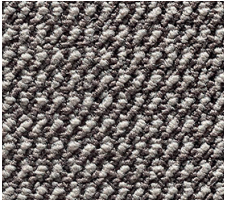


EN14041
CE
21
Balta Industries - Kanegem- straat 15 - BE 8700 Tielt
DOP: 1011#IE00ACL
Textile Floor Covering EN1307 Notified body 2401
www.baltamediabank.com

e - check AB



▲ 34



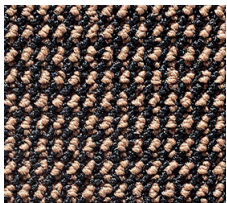
▲ 94



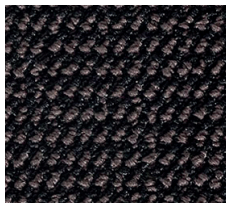
▲ 43



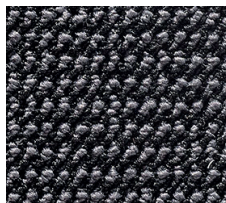
▲ 44



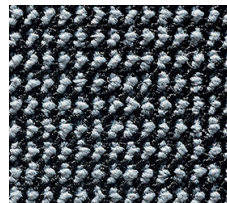
▲ 47



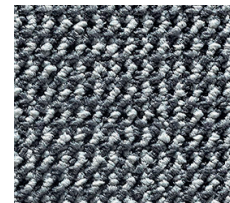
▲ 41



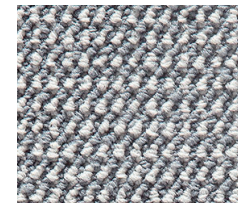
▲ 98



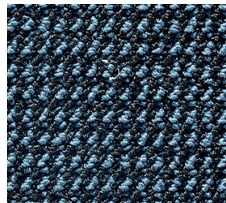
▲ 97



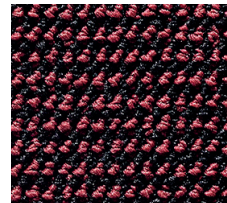
▲ 95



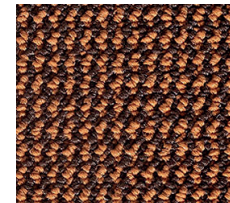
▲ 90



▲ 78



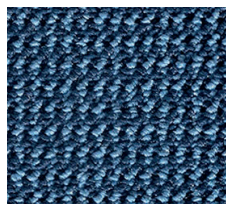
▲ 17



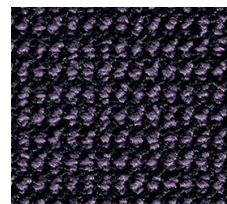
▲ 54



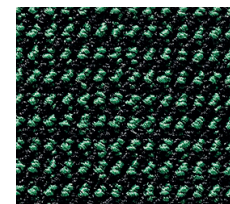
▲ 93



▲ 75



▲ 89



▲ 24



▲ 20